

C

THE BEST. CHOOSE THE BEST.



Choose
Big Size.



Choose A
Better Lifestyle.



Choose
The Best Price.

TOWER C

LAGOM

2 BHK PERFECT HOMES
WAKAD, PUNE



Artistic impression

PERFECT IN EVERY RESPECT!

It just cannot get better than this. Lagom is perfection at its best. Situated at a strategically convenient location at the heart of Wakad, a home here is a perfect fulfillment of all your dreams. Experience all that you have dreamt of for your brand new home. Be it connectivity, a promising neighborhood, a fast developing locale, plush living and a creation that is precisely crafted as per your aspirations. Lagom is all set to exceed all your expectations. Own a perfect luxury condo here at just the right price and embark on a vibrant life you have imagined for your family.

WELCOME TO LAGOM. LET A PERFECT
BOND PROSPER FOREVER!

LAGOM

2BHK PERFECT
HOMES



DESIGNED TO IMPRESS, CRAFTED TO PERFECTION



IMPECCABLE COMFORT AND AN UNMATCHED LIFESTYLE



ELEVATED LIVING FOR PERFECT LUXURY

AMENITIES

- Decorative Main Gate with Security Cabin
- Luxurious Entrance Lobby
- Video Door Phone & Intercom System
- Beautifully Designed Landscape Garden
- Children's Play Area
- Swimming Pool
- Gazebo
- Clubhouse and Health Club
- Garbage Chute
- Sewage Water Treatment Plant
- Rainwater Harvesting
- CCTV Security in Lobby Passage & Common Areas
- Solar Water Heater
- Fire Fighting System
- Provision for Piped Gas Connection
- Gen Set Power Backup for Common Facilities
- Concrete / Paved Internal Roads
- Earthquake Resistant RCC Framed Structure
- Branded Electrical Switches and Wires
- Wifi, T.V., A.C. Point in All Rooms
- Common Setup of Reputed D2H Providers
- 2 Automotive Elevators with Power Backup in each Tower (Kone or Equivalent)



SPECIFICATIONS

Flooring:

- 800x800 mm. Vitrified tiles in all the rooms
- Anti-skid flooring in terrace and dry balcony

Doors:

- Laminated doors for entrance and bedrooms
- Powder coated aluminum doors for terrace
- Granite frames for all washrooms and dry balcony doors Laminated doors for washrooms

Windows:

- Powder coated aluminium sliding window with mosquito net
- Four side granite window sill

Kitchen:

- Granite top kitchen platform with stainless steel sink
- Glazed tiles dado above counter up to lintel level

Toilets:

- Tiling: Glazed dado tiles up to lintel level and anti-skid flooring tiles (Kajaria or equivalent)
- Wall hung water closet (commode) & counter top wash basin (Cera or equivalent)
- Cera / Jaguar or equivalent chrome plated fitting for all washrooms

Electrification:

- Branded modular concealed copper wiring T.V, A.C. & Telephone points in living and both bedrooms

Painting:

- Acrylic paint for exterior
- OBD paints for all internal walls

Internal walls:

- River-sand plaster with Gypsum finishing for internal walls



Artistic impression



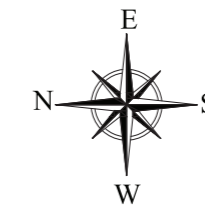
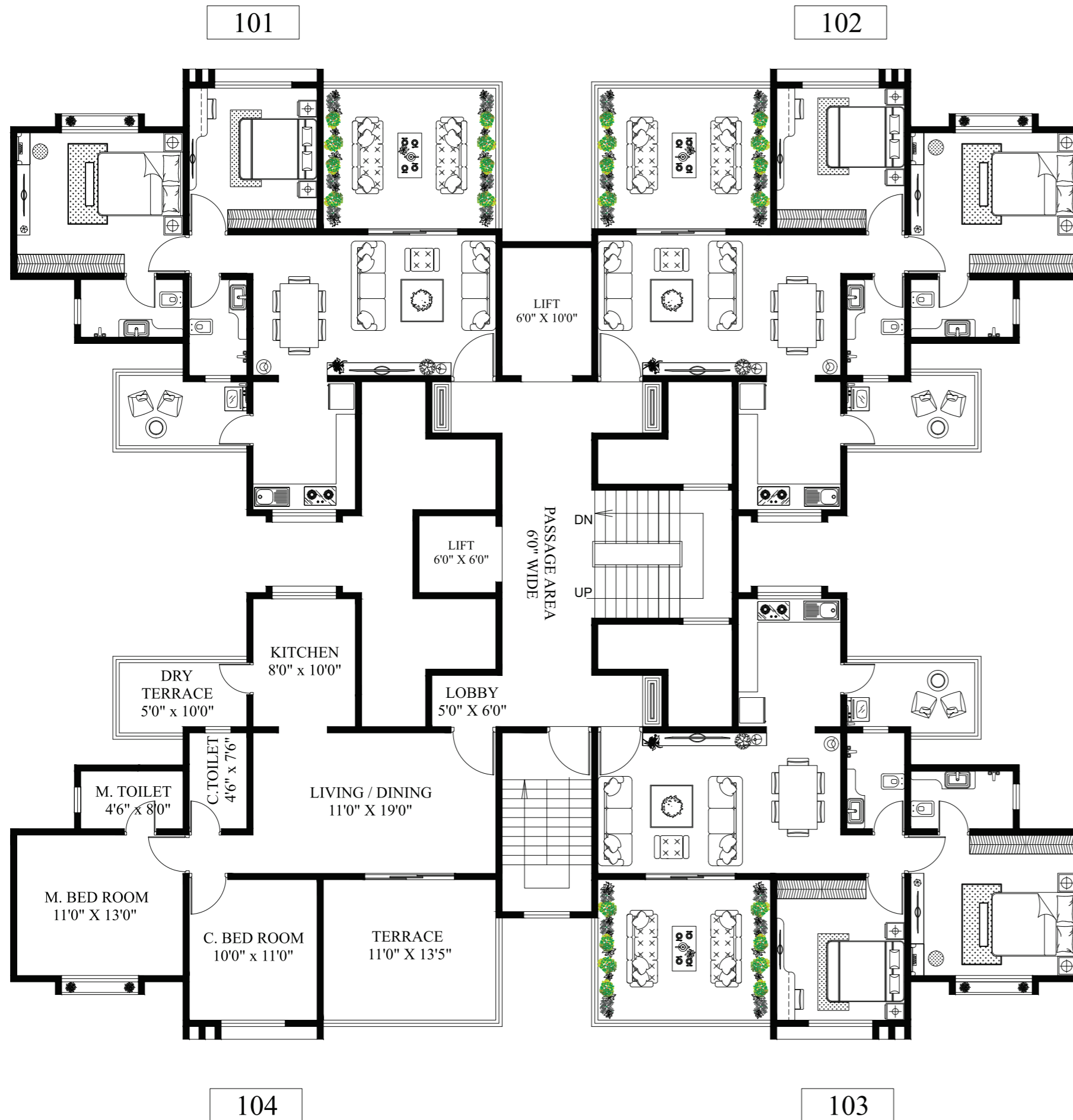
Artistic impression



Artistic impression

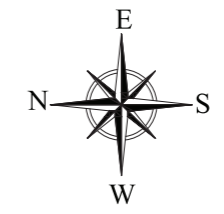
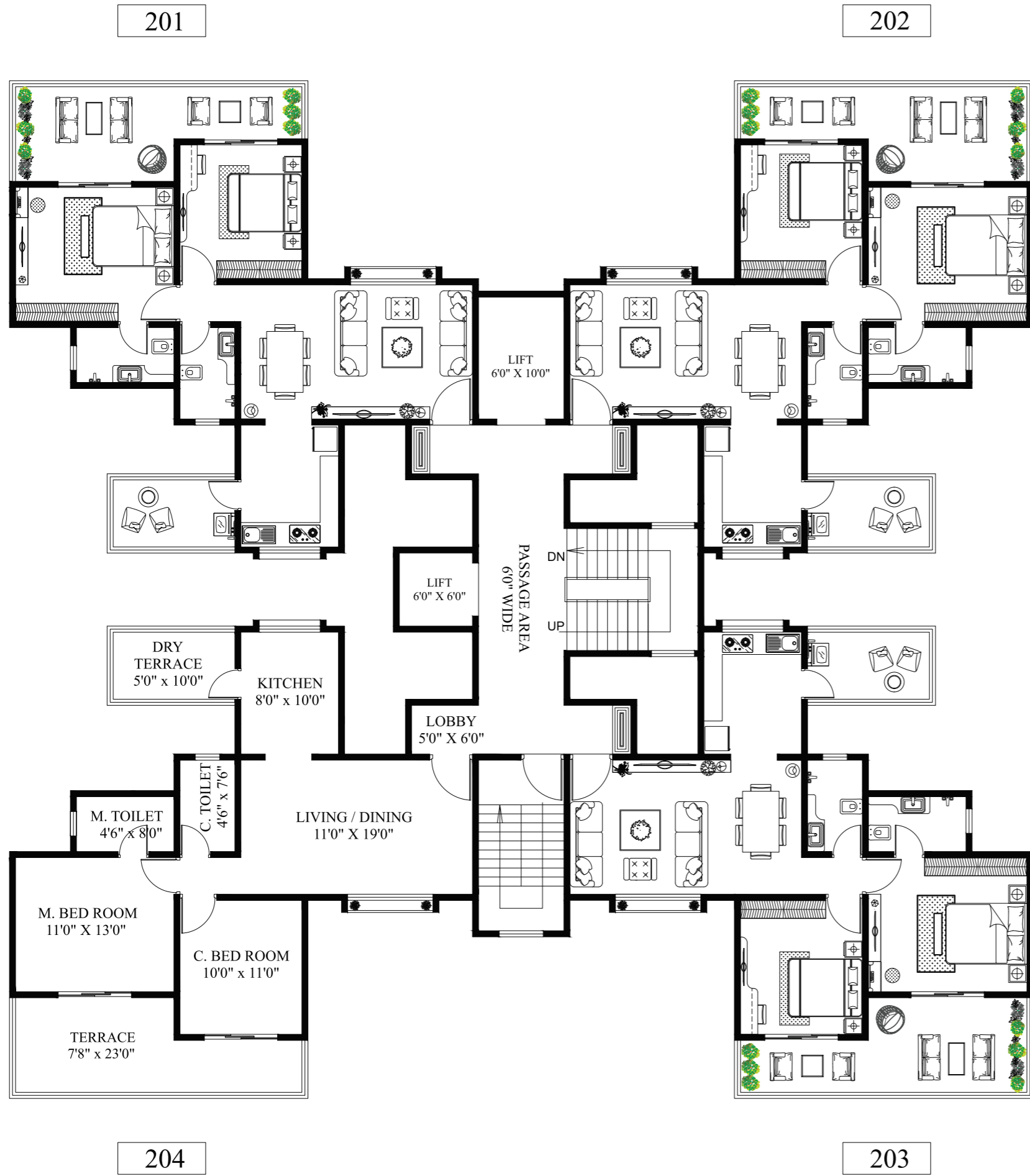


UNWIND IN STYLE WITH AMAZING AMENITIES



C WING

**TYPICAL 1ST, 3RD, 5TH, 9TH, 11TH,
13TH, 17TH & 19TH FLOOR PLAN**



C WING

2ND, 4TH, 6TH, 8TH, 10TH, 14TH, 16TH & 18TH FLOOR PLAN

2 BHK CUT SECTION



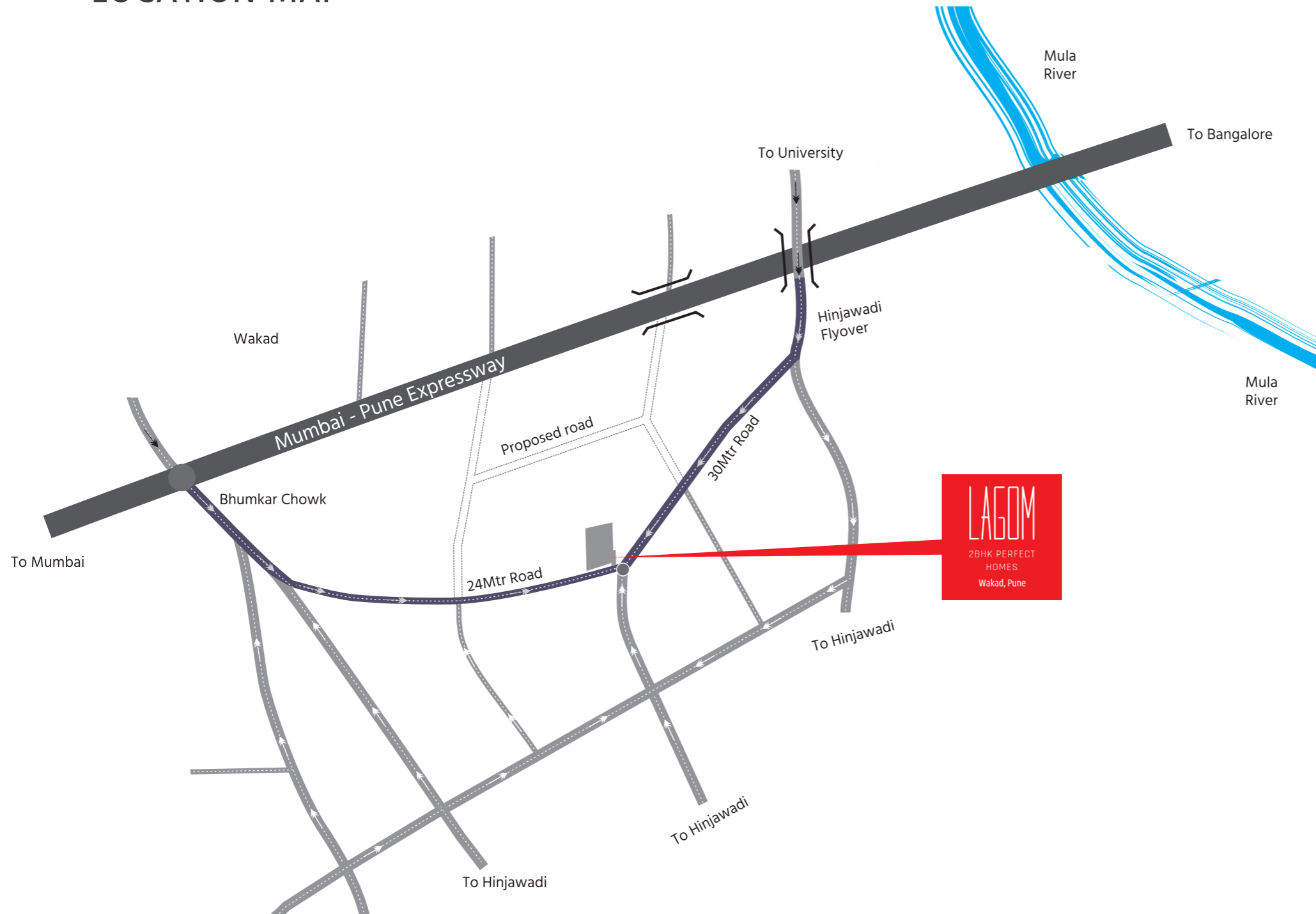
RIGHT SIZE, RIGHT LOCATION, RIGHT PRICE!

2 BHK CUT SECTION



RIGHT SIZE, RIGHT LOCATION, RIGHT PRICE!

LOCATION MAP



KEY DISTANCES

- Hinjawadi IT Park - 1.5 km
- Xion Mall - 1.0 km • Dmart - 1.0 km
- Big Bazaar - 1.0 km

EDUCATIONAL INSTITUTES

- Indira National School
- Blossom Public School
- VIBGYOR High School
- Pawar Public School
- Blue Ridge Public School
- Akshara International School
- Euro School
- Mercedes-Benz International School

HOSPITALS

- Surya Super-Speciality Hospital
- Aditya Birla Memorial Hospital
- Global Multi-Speciality Hospital
- Ruby Hall Clinic3
- Jupiter Hospital

HOTELS

- Courtyard by Marriott
- The Gateway Hotel
- Hyatt Palace
- Sayaji Hotel
- Radisson Blu
- Holiday Inn
- Ibis

FUEL STATIONS

- Bharat Petroleum
- Indian Oil Corporation

BANKS

- State Bank of India
- ICICI Bank
- HDFC Bank

A PROJECT BY



Site Address:
 Sr. No. 152/4, Deokar Wasti,
 Wakad, Pune - 411057
 Call: 8888948811 | 8888298811



MAHARERA REG.NO.: P52100026791
<https://www.maharera.mahaonline.gov.in>